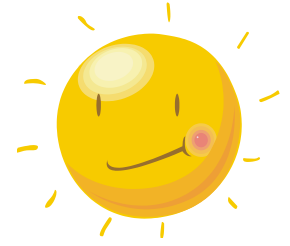




Charter School of Educational Excellence

260 Warburton Avenue, Yonkers, New York 10701
(914) 476-5070 • Fax (914) 476-2858



Summer Greetings from the Principal

August 10, 2010

Dear CSEE Parent Community:

As we approach the opening of school, I wanted to take this opportunity to welcome all new and returning parents to the Charter School of Educational Excellence. As you know CSEE has been approved by the Board of Regents to extend its programs to middle school and we are very excited that this year CSEE will be welcoming its first 7th grade class.

Although there is a lot of excitement about our growing school, many parents have questions and concerns about the temporary site our students will be occupying during the construction of our new middle school building. I want to assure you that we have selected an adequate site for our instructional purposes at the IPark Building that is located at **470 Nepperhan Avenue** in Yonkers, NY. The building is less than two miles from the main building on Warburton Avenue. We are leasing a portion of the second floor of the building for our middle school. The building is clean, spacious and appropriate for our needs.

Transportation to the new building is on the minds of many parents as we prepare for the opening of school. Transportation policies remain the same for students in Yonkers that are eligible for transportation. Please contact the Yonkers Public Schools Transportation Department if you have questions about your application and eligibility. For Bronx students, Tur Bus will communicate directly with you regarding new bus routes for 2010-2011. Bronx parents, please be advised, that we have made changes to discipline and safety policies for students. Discipline matters will no longer be handled on the school level unless the matter requires administrative intervention. Tur Bus will be communicating their new policies and consequences for misbehavior on the school buses directly to parents. Tur Bus will notify the school of any suspension and/or permanent loss of transportation privileges for students failing to follow safety procedures established by the bus company. CSEE will support the recommendations and consequences set forth by Tur Bus regarding their rules to ensure stricter policies that are intended to minimize misbehavior of students on the school buses and keep our children safe.

We are discussing new uniforms for middle school students. However, these uniform changes will not be in effect for September 2010. Until further notice all CSEE students in Grades K-7 will continue using the same standard CSEE school uniform. See **Uniform Policy** enclosed.

SCHOOL OPENS for students on Tuesday, September 7, 2010. School is closed for Rosh Hashanah on **Thursday, September 9th** and **Friday, September 10th**. **Our school hours are 8:00 a.m. to 4:00 p.m.** Breakfast is served at 7:30 a.m. Students are not permitted to enter the building until 7:30 a.m. Therefore, please do not drop your children off at the front door of the school and leave them unsupervised during early morning hours when the school is not staffed to supervise students appropriately.

Arrival time for middle school students in Grades 5-7 is the same for breakfast (7:30 a.m.). If your child does not eat breakfast in school, please have your child (Grades K-7) arrive to school at 7:55 a.m.

Middle School students will be entering the IPark Building at the door closest to Nepperhan Avenue. The school sign will be posted on the metal door to make it easier to find. **See the IPark Building arrival/dismissal map attached.** Parents will not be permitted to enter the building with their children in the morning as entrance to the building from that door is restricted only for students during morning arrival for security purposes. If a parent needs to gain access to the building, the visitor's entrance is located at the main door in the parking lot area (see the **BLACK STAR** symbol).

I have enclosed some very important documents that you must complete and return to the school with your child on the first day of school. If you have more than one child in the school, you must complete and submit a separate form for each child.



- **Student Emergency Contact Form**
- **Lunch Application (2010-2011)**
- **Media Release Form**
- **Neighborhood Walk Consent Form**

Also, included in this mailing is a copy of the **Teacher Coaching Days** calendar. These days are very important for parents to know as students will be dismissed from school on these days at 12:00 p.m. Please mark your calendars and make arrangements for your child/ren to be picked up promptly from school on these half days. Lunch and transportation will be available to students on these days.

There is also a letter from our PTO President, Mr. Ibrahim and a copy of the PTO meeting calendar for the year. The PTO will address our parent community at Open House on September 16th at 5:30 p.m. We look forward to your membership and participation in the PTO but most of all; we need you to be involved in your child's education and a contributing member to the CSEE school community.

I know many of you are anxious to know how your child/ren performed on the New York State Assessments now that the bar was set higher for students to pass. Although schools and districts across New York State showed some serious deficiencies, CSEE outperformed students in New York City, Yonkers, and New York State. Overall, CSEE demonstrated consistency in student achievement despite NEW passing requirements. CSEE still came out on top! Our teachers and students deserve our congratulations for their hard work and efforts in sustaining a high level of student performance in both English Language Arts and math. Kudos to CSEE!

CSEE vs. Other Districts and New York State	ELA Levels 3 & 4	Math Levels 3 & 4
Charter School of Educational Excellence	★70%	★77%
Yonkers Public Schools	43%	46%
New York City Public Schools	45%	57%
<i>*New York State Average</i>	55%	62%
Note: Level 3 and Level 4 denote students who have met and exceeded New York State Standards in ELA and math in Grades 3-6. This chart indicates the percentage of students that passed state assessments in 2010.		

The state will be releasing student assessment reports to parents sometime in the fall. The school will forward this information to you once the information becomes available.

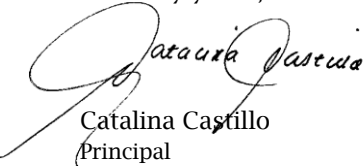
In closing, I want to take this opportunity to inform you about the reorganization of the staff here at CSEE. Mrs. Cynthia Cameron, formerly the Executive Administrative Assistant, is working in a new capacity as the Data, Assessment, and Compliance Coordinator. I want to welcome her replacement, Mrs. Crickett McFadden, as the new Administrative Assistant. Mrs. McFadden will be supporting our Assistant Principal, Mrs. Gloria Smith, and me in all school administrative matters. Please direct calls to our offices to Mrs. McFadden at Ext. 12.

Ms. Abigail Rivera, the former receptionist, has also taken on new job responsibilities this year. Ms. Rivera is now our new Business Assistant and will be working directly with the Business Manager, Mrs. Stephanie Alves. Please join me in congratulating our staff on their promotions and welcoming Mrs. McFadden to the CSEE family. All new members to CSEE will be announced in September.

Visit our website for school calendars, a list of school supplies for all grade levels, and much more. Continue to check the site for updates and changes to any information in this letter.

Feel free to email me at ccastillo@cseeschool.org if you have any questions or concerns or leave a message for me with Mrs. McFadden at 914-476-5070 Ext. 12. Enjoy the rest of your summer. I look forward to welcoming our children back to school on September 7th.

Sincerely yours,



Catalina Castillo
Principal